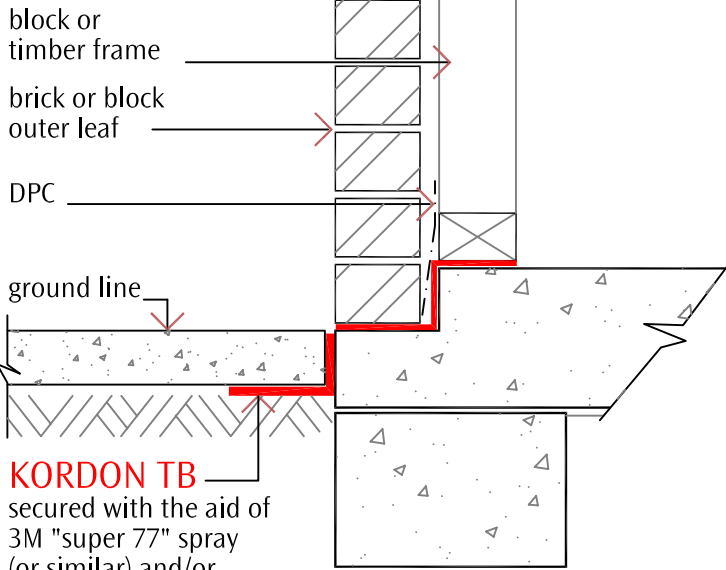




**photo 1**

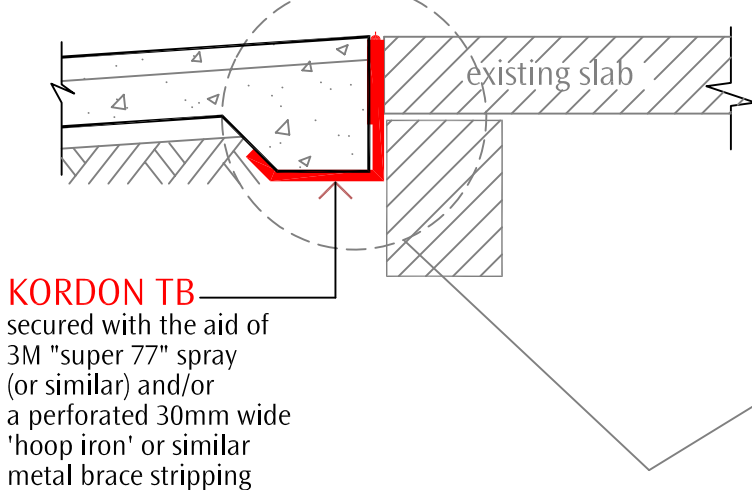
installed against slab edge



**KORDON TB**  
secured with the aid of  
3M "super 77" spray  
(or similar) and/or  
a perforated 30mm wide  
'hoop iron' or similar  
metal brace stripping

**section detail 1**

high paving level (photo 2)



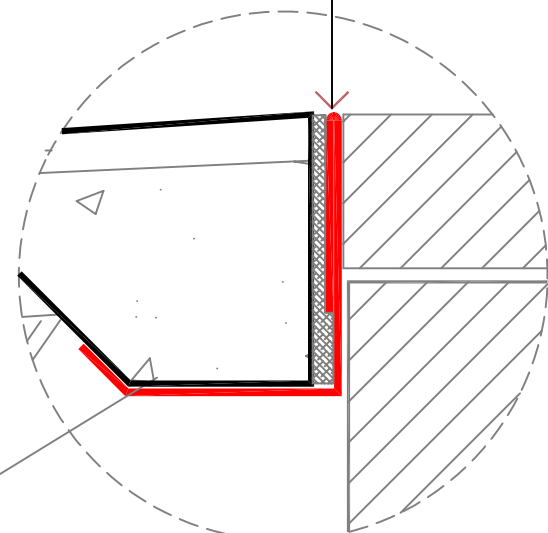
**KORDON TB**  
secured with the aid of  
3M "super 77" spray  
(or similar) and/or  
a perforated 30mm wide  
'hoop iron' or similar  
metal brace stripping



**photo 2** garage entry detail

secured with the aid of 3M "super 77" spray or similar  
Note:  
where various slab conditions prevail i.e.  
rough or damaged:-  
It is important to establish a full seal to  
the perimeter is achieved

**KORDON TB**  
a minimum width of 300mm Kordon TB  
is to be installed with a foldback of  
100mm approx, as shown.  
where dowelling occurs: installation may  
vary depending on engineer's instructions  
Confirm with Kordon training manager



**section detail 2**

driveway, disabled ramp & entry

 **KORDON TERMITE BARRIER**

Subject

Sheet No.

perimeter paving/slab (concrete to concrete) **kd 041/b**